

COMPUTE THAT POWERS TRANSFORMATION

HPE ProLiant and HPE Synergy systems

DIGITAL TRANSFORMATION IS ACCELERATING AND GROWING

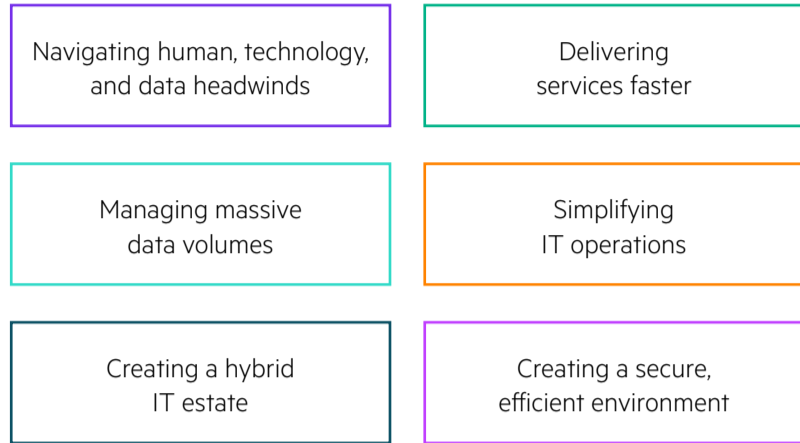
In 2020, the economic value of digital transformation (DX) represented almost \$19 trillion—an amount equivalent to 20% of the global GDP.¹

A recent Forbes' C-suite survey² found that:



DX IS THE OBJECTIVE, BUT DIFFICULT TO ACHIEVE

Numerous obstacles stand in the way of DX success:



REACH DX SUCCESS WITH NEW COMPUTE SOLUTIONS FROM HPE POWERING THE NEXT WAVE OF DX

Delivering a new and totally transformed compute foundation

ONE UNMATCHED WORKLOAD OPTIMIZATION

Eliminating the guesswork on setup and management

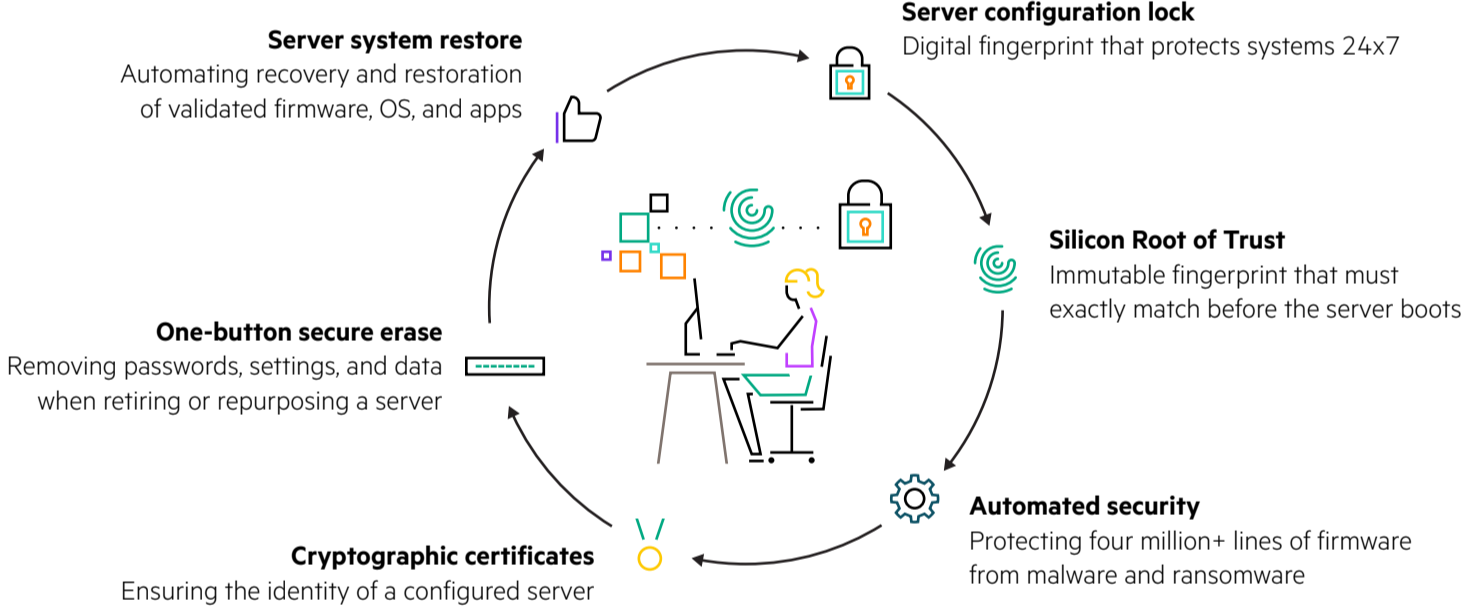
Optimizing workload performance, placement, and efficiency to deliver better outcomes faster

Delivering workload-oriented cloud services with thousands of component combinations



TWO 360-DEGREE SECURITY

Enhanced, holistic, view to security begins in the manufacturing supply chain and concludes with safeguarded, end-of-life decommissioning.



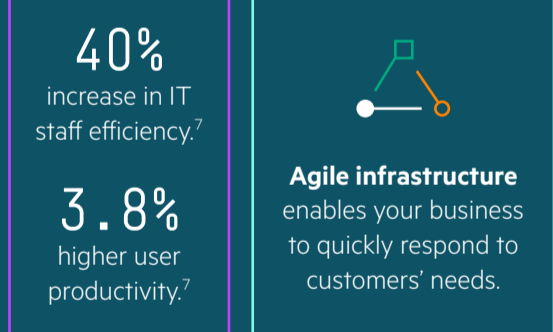
THREE INTELLIGENT AUTOMATION

Simplifies and automates management tasks, establishing a solid foundation for an open, Hybrid Cloud platform enabled by composability.

HPE Integrated Lights-Out
Core intelligence enables reporting, management, alerting, and local/remote management to quickly identify and resolve issues.

HPE OneView
Provides automated template-driven approach for deploying, provisioning, updating, and integrating IT infrastructure.

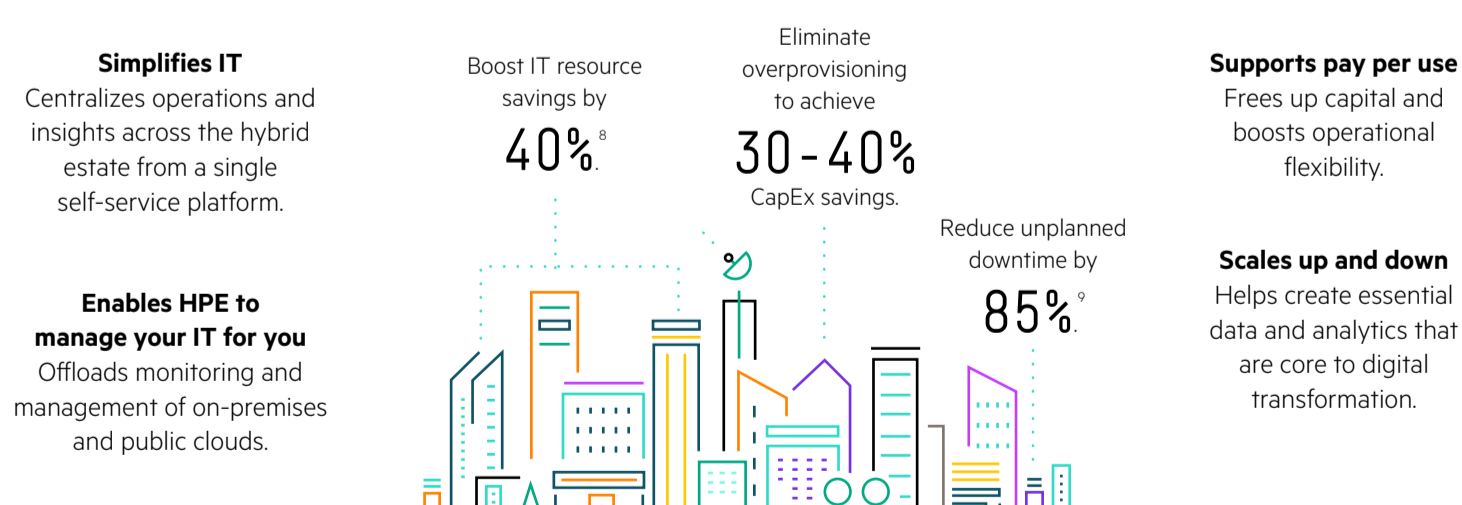
HPE InfoSight for Servers
Continual AI-driven insight to server operations predicts and prevents problems before IT operations are impacted.



Agile infrastructure enables your business to quickly respond to customers' needs.

FOUR EVERYTHING AVAILABLE AS A SERVICE

HPE GreenLake makes the modern cloud experience possible everywhere—across edges, colocation facilities, data centers, and multiclouds.



TRUSTED PARTNER HELPS ELEVATE YOUR BUSINESS

Work with HPE to create a true workload-optimized and as-a-service experience for your complete hybrid IT estate—from edge to core to cloud. Trust HPE to deliver new and transformed compute capability for your modern digital enterprise.

CONTACT

→ CSPI Technology Solutions, a Hewlett Packard Enterprise Silver Partner, provides the expertise and service scope - including Managed IT Services, Professional Services, and Cloud Services - to help you architect and manage a high-performance, highly available, and highly secure IT infrastructure. For more information: us-ts-inquiry@cspi.com or 1 (800) 940-1111.

- Complete, proven, validated compute solutions
- Strategy and planning from **HPE Pointnext Services**
- The cloud that comes to you through **HPE GreenLake**
- Flexible financial model from **HPE Financial Services**

¹ IDC, Worldwide Digital Transformation Strategies, IDC Special Intelligence Service, August 2019.

² Forbes, 2019 and 2020 Stats on Digital Transformation.

³ Based on HPE Synergy platform.

⁴ HPE case study, "Berlin prepares for major ICT migration," August 2019.

⁵ HPE case study, "Composable Infrastructure Platform Automates IT for Healthcare Provider, Elbe Clinics," February 2020.

⁶ HPE case study, "Holy Fashion Now Has Greater Agility with Composable Infrastructure," October 2019.

⁷ IDC study, Quantifying the Business Value of Enhanced IT Agility and Performance with HPE Synergy, February 2021.

⁸ Forrester Consulting, "The Total Economic Impact™ Of HPE GreenLake," June 2020.

⁹ IDC technical paper, "The Business Value of HPE GreenLake Management Services," January 2020.