

# OVERCOME REMOTE WORK CHALLENGES WITH HPE POINTNEXT SERVICES

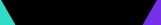


## IN AN ENVIRONMENT RIFE WITH UNCERTAINTY, REMOTE WORK IS THE NEW NORMAL

The current health crisis has ushered in remote work on an unprecedented, untested scale, with no immediate end in sight.

### MAINTAINING REMOTE PRODUCTIVITY WITH HPE POINTNEXT SERVICES

#### CONNECT AND PROTECT YOUR BUSINESS



Secure access to corporate resources at scale for work-from-home setups, telemedicine, pop-up sites, virtual call centers, distance learning, and temporary facilities



Help with understanding, implementing, and expanding advanced endpoint protection, threat protection, secure remote access, and endpoint visibility, control, and compliance solutions

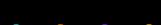
Services, capabilities, and partnerships across Aruba, Microsoft, VMware®, Fortinet, Citrix, Check Point, and others to help you meet remote access demands, upgrade or increase capacity, or deploy new solutions



Remote network assessment offerings—network readiness & security assessment for remote work solutions

A suite of services to help you understand the ideal way to implement and adopt Microsoft Teams, Skype for Business, Microsoft SharePoint, and HPE MyRoom

#### ENABLE EFFECTIVE UNIFIED COLLABORATION



HPE MyRoom Visual Remote Guidance (VRG) Services—live, visually-guided remote collaboration between remote personnel and your experts



HPE Fast Start Service for Microsoft Teams that's designed to help you accelerate the usage of Microsoft Teams

- HPE can provision an end-to-end, secure cloud desktop solution, fully supported and managed by HPE Pointnext Services
- HPE Remote Work Rapid Assessment service
- Partnerships with Microsoft and Citrix to provide a fully managed, single-vendor solution
- HPE is a Citrix Cloud Service Provider (CSP), so can provision, manage, and host new Citrix Cloud environments quickly and easily
- HPE is a Microsoft partner with specialist skills in Microsoft Teams and the full stack of Microsoft 365
- HPE is a Microsoft CSP, so can provision, manage, and host new Microsoft Azure workloads

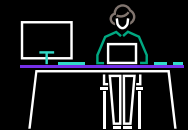
#### EMPOWER YOUR WORKFORCE WITH FAST, SECURE VIRTUAL DESKTOP INFRASTRUCTURE (VDI)

- HPE GreenLake's secure and efficient VDI solution keeps your workloads on-premises and enables you to scale simply with a consumption-based billing model
- Hardware and software installed in your own environment
- Simplified design, migration, and management leveraging deep VDI expertise and tools
- Services to meter, monitor, and manage capacity ahead of demand
- Seamless scalability to respond quickly to the needs of your business

#### MEET REMOTE MANAGEMENT AND STAFF AUGMENTATION NEEDS



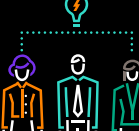
Emergency/mass notification services



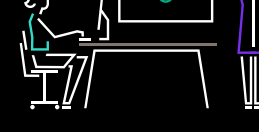
HPE Quick Start Service for Digital Workplace Adoption and online learning subscriptions



Focus on new ways of work



Training and enablement—management of change and education services



Educate and train your employees on software

Generate cash from assets: Convert existing IT assets into an incremental cash source while retaining use of the systems; use excess technology to generate capital.

Match payment to use: Acquire compute and storage capacity now with the flexibility to configure, test, and stand up systems before paying.

Defer or reduce expenses: Take advantage of our 90-day delayed payment structure to help ease tight budget; make use of our 2020 payment relief program.

Relieve capacity strain: Use certified, authentic previous-generation HPE technology configured to your specifications; rent certified preowned, factory-configured technology available with a warranty and eligible for support services.

#### FOUR WAYS TO GAIN FINANCIAL FLEXIBILITY IN A VOLATILE MARKET

Single partner to manage your full stack of remote work solutions

Offers management of change and education services to help you adopt new software and collaboration tools

Over 30 years of workplace consulting experience with over 20 years of remote workplace consulting experience

Leverages in-house assets with complementary partner resources to deploy end-to-end solutions

#### WHY HPE POINTNEXT SERVICES TO COPE WITH THE REMOTE WORK SURGE?

HPE is positioned in the Leaders category in the IDC MarketScape for Worldwide Digital Workspace Services 2020<sup>1</sup>

HPE has satisfied the requirements and attained 10 competencies in the Microsoft Partner Network program<sup>2</sup>

Navigate uncertainty and maintain remote productivity with advisory, professional, and operational services from HPE Pointnext Services. Find new ways to thrive in an ever-changing landscape of unknowns.

#### LEARN MORE AT

[hpe.com/us/en/solutions/business-continuity.html](https://hpe.com/us/en/solutions/business-continuity.html)

<sup>1</sup> IDC MarketScape: Worldwide Digital Workspace Services 2020 Vendor Assessment, IDC, March 2020

<sup>2</sup> [microsoft.com/en-us/solution-providers/partnerdetails/hewlett-packard-enterprise\\_510d52d6-84c1-4b80-b21f-688382fb06f4/7c6b9243-109e-40e6-bbbd-73ba9040ae0f](https://microsoft.com/en-us/solution-providers/partnerdetails/hewlett-packard-enterprise_510d52d6-84c1-4b80-b21f-688382fb06f4/7c6b9243-109e-40e6-bbbd-73ba9040ae0f)