

# TOP FIVE REASONS TO KEEP MICROSOFT APPS ON HPE NIMBLE STORAGE DHCI

Get increased control, functionality, performance, availability, and cost savings



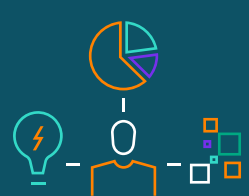
Many companies run their own Windows applications—Microsoft Exchange Server, SQL Server, and SharePoint—and have been doing it on-premises with few problems over many years. Now, faced with aging hardware, the question is whether they should keep doing it.

For most companies, the answer is “yes,” especially if business-critical applications, regulatory requirements, data sovereignty, and security are involved.

Enter Hewlett Packard Enterprise with its infrastructure products, including [HPE Nimble Storage disaggregated HCI \(dHCI\)](#), that provide key benefits for hosting mixed Microsoft workloads—delivering top-notch performance, availability, and manageability.

Discover the top five reasons customers are choosing to refresh their environments and continue running their IT infrastructure:

01



## DATA GOVERNANCE AND CONTROL

**“55% of organizations surveyed have a hybrid cloud and use it to deploy applications where it makes the most sense.”**

– IDC<sup>1</sup>

Top-cited reasons to keep workloads on-premises include data governance and sovereignty, which have become big drivers since the introduction of laws such as General Data Protection Regulation (GDPR). They have also driven hybrid cloud approaches that blend the control of on-premises IT with the agility of cloud computing. With hands-on control comes the benefit of familiarity, enabling customers to continue to do what they do well—running IT within their data center.

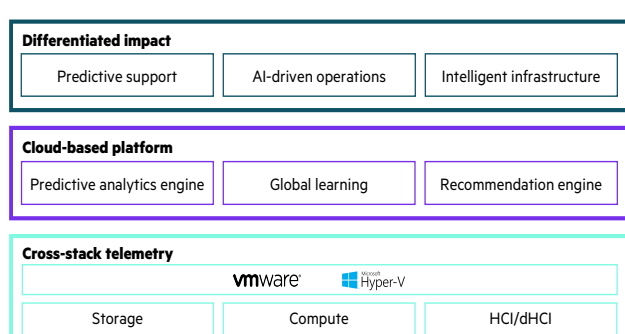
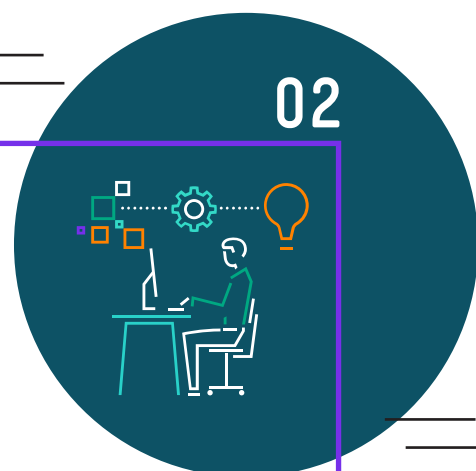


FIGURE 1. AI-enabled HPE InfoSight full-stack telemetry

## ROBUST DATA SERVICES



Intelligent storage from HPE has the AIOps-enabled ability to predict and address problems even before IT teams become aware of them. Traditional on-box features provide extensive data protection and availability benefits such as RAID 6, snapshot backups, replication, and encryption—usually with no additional licensing cost.

03



## CONSISTENT PERFORMANCE AND LOW LATENCY

**“HPE Nimble Storage dHCI is elegant and simple, yet high performing and designed for a virtualized environment...”**

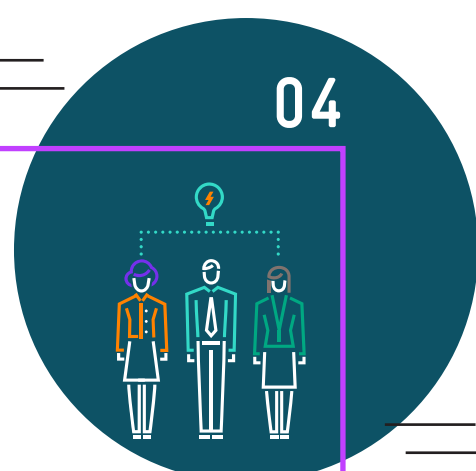
– Adrienne Chee, Senior Vice President of Technology Operations, Central Pacific Bank<sup>2</sup>

HPE storage delivers predictable high performance and nondisruptive scale for running multiple business-critical workloads, including the benefit of data storage that delivers millions of IOPS with less than a millisecond of latency.

**99.9999%**

data availability with  
HPE Nimble Storage dHCI

## GUARANTEED AVAILABILITY



HPE offers data availability guarantees of up to 99.9999% for HPE Nimble Storage dHCI.<sup>3</sup> HPE InfoSight helps ensure this uptime. Hyperscalers like AWS can guarantee only a 99.5% delivery on some services before offering service credits.<sup>4</sup>

05



## REDUCED COST

With HPE storage, you get the savings benefits of less overhead and data efficiency from inline deduplication, active compression, block folding, and zero-pattern elimination. Hyperscalers might streamline data behind the scenes but still charge you for the entire data capacity.

With HPE Nimble Storage dHCI, you can achieve up to 2.8x<sup>5</sup> lower TCO from less overprovisioning and other savings. With HPE storage, you realize additional savings—as much as 80% or more based on a typical 4:1 data reduction ratio.<sup>6</sup> And with the latest HPE Store More Guarantee, customers no longer have to worry about specific ratios because HPE storage is guaranteed to store more data in the same raw capacity, or less, than any competitive offering.<sup>7</sup>

Customers also realize labor savings from simplified management through setup wizards, integrations across applications, and automation tools such as free PowerShell toolkits.

CSPi Technology Solutions, a Hewlett Packard Enterprise Silver Partner, provides the expertise and service scope - including Managed IT Services, Professional Services, and Cloud Services - to help you architect and manage a high-performance, highly available, and highly secure IT infrastructure. [Visit website to learn more.](#)

Make the right purchase decision.  
Contact our presales specialists.



Chat now (sales)



Call now



Get updates

<sup>1</sup> [IaaSView 2020: Survey findings](#), IDC

<sup>2</sup> [hpe.com/us/en/newsroom/press-release/2020/11/central-pacific-bank-powers-virtual-workforce-with-hewlett-packard-enterprise.html](#)

<sup>3</sup> [hpe.com/psnow/doc/a00058506enw?from=app&section=search&isFutureVersion=true](#)

<sup>4</sup> [aws.amazon.com/compute/sla](#)

<sup>5</sup> [hpe.com/psnow/doc/a50005424enw?from=app&section=search&isFutureVersion=true](#)

<sup>6</sup> [hpe.com/psnow/doc/a50002571enw?from=app&section=search&isFutureVersion=true](#)

<sup>7</sup> [hpe.com/psnow/doc/a00039975enw?from=app&section=search&isFutureVersion=true](#)